

QUICK BELT™ 50F/120F

INSTALLATION INSTRUCTIONS:

WARNING:

Risk of damage or injury if concealed pipes or wiring are contacted during installation. If unsure seek qualified help.

WARRANTY/DISCLAIMER

HOLDRITE warrants this product to be free of defective material and workmanship for as long as you own the water heater it secures. This is the full extent of our lifetime warranty. It is the responsibility of the user to make sure the restraint is properly installed. HOLDRITE shall not be liable for improper installations.

PATENT PENDING

Package Contents

PACKAGE CONTENTS:

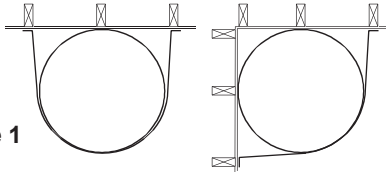
- 4 - Straps
- 4 - Lag Bolts
- 2 - Wire Clips

If not a "Zero Clearance" water heater, back spacer is needed. Use or construct two spacers to meet water heater manufacturer's spacing requirements, one at each strap height. Lag bolts must not attach to back spacers.

Step 1

Select location for water heater.

Figure 1



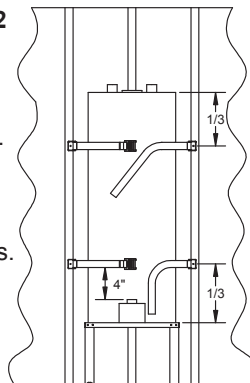
The best place to locate your water heater is directly in front of a 2" x 4" wall stud. See Figure 1.

Step 2 & 3

Figure 2

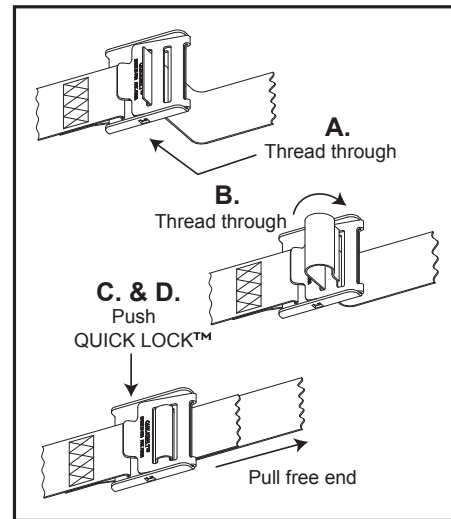
Mark stud locations on both sides of heater within top and bottom thirds. Bottom strap must clear controls by 4". See Figure 2.

Attach end brackets to studs at marks with lags, noting orientation of brackets.



Step 4

Join straps in front: A. Insert free end from behind and through front buckle. B. Loop free end over front of buckle, back through second slot, and out through back of buckle. C. Dress loop and pull free end to remove slack. D. Press down on Quick Lock™ to secure strap.* E. Secure excess strap with supplied wire clip.



***BUCKLE RELEASE:** Insert screwdriver into gap between front plate and side flange, just forward of each lock. Twist gently while prying up. Pull up on thumb tab to free strap.

Full performance even if only one lock is engaged.

Step 5

Repeat the entire installation process for the second pair of straps using the same hole and slot positions as the first installation.

Installation Complete

DSA
APPROVED

